

- sending the text messages (emergency alarms) to selected or a group of selected tags,
- resistance to interference from other radio equipment (eg. Access points WiFi),
- giving the **emergency alarm** by the supervised persons to the mine dispatcher,
- self-diagnostic system devices and data networks,
- multi-level data archiving, generating reports and statistics based on the data collected,
- balancing the number of employees entering / leaving the monitored zones to ensure the proper migration of humans,
- alarms for employee detour, too long time of remaining in the specified zone, too many people in a given area, etc.,
- intuitive visualization software made in the technology WEB,
- searching people within the system range with their exact location.



Awards winner:



MTK Trade Fair medal in 2011, 2013



„Napędy i Sterowanie” Journal Product of the Year 2012

PPHU ATUT Sp. z o.o.

Manufacturing plant and offices:
ul. 1000-lecia Państwa Polskiego 30a
41-400 Mysłowice

tel. +48 32 317 18 60 / fax +48 32 317 18 89

e-mail: biuro@atutnet.pl
www.atutnet.pl

HUMAN MONITORING AND TRACKING SYSTEM

ATUT - LOCATION

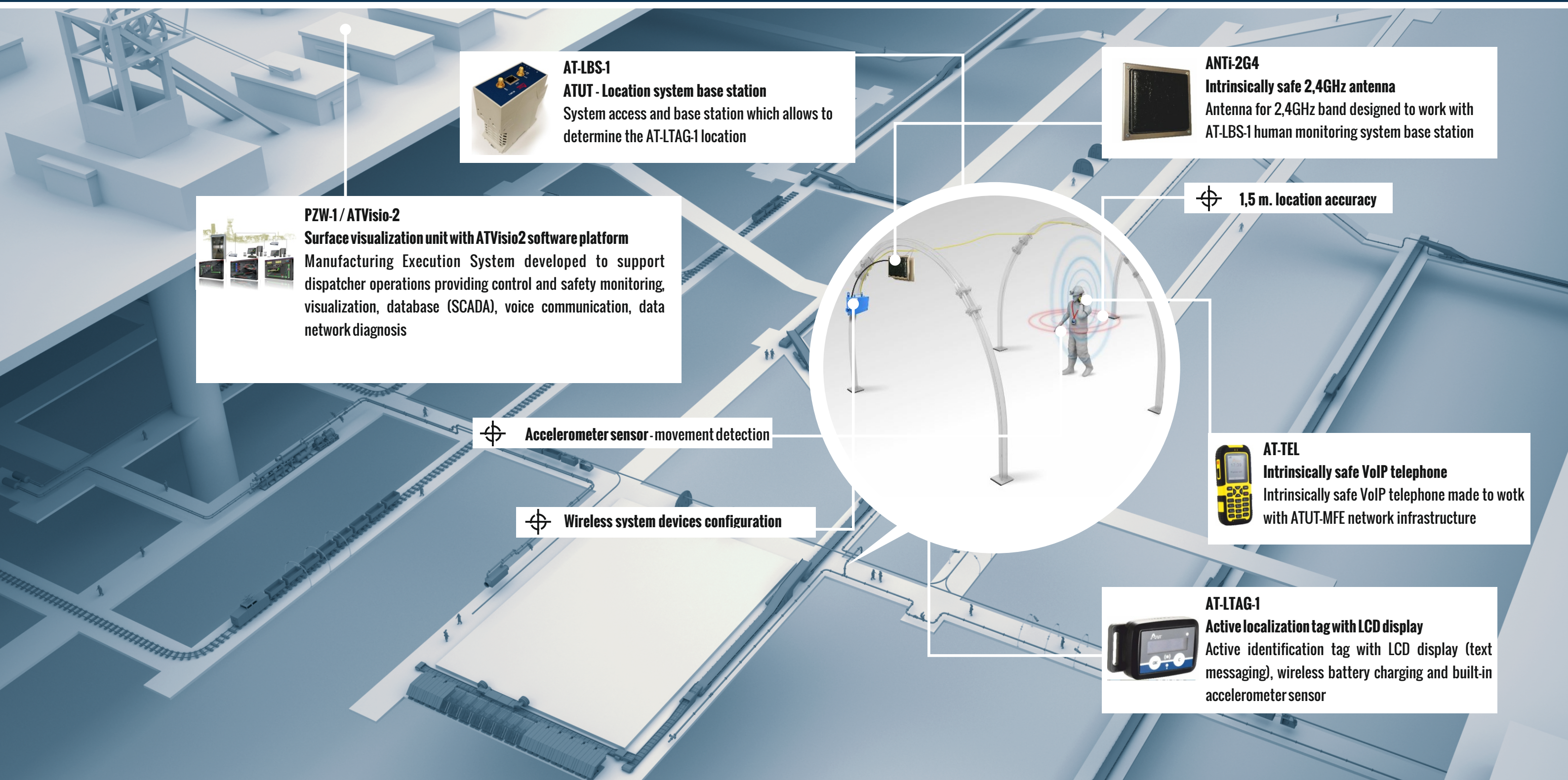
ATUT-Location System was established primarily with the aim of increasing the safety of persons employed in mine plants. ATUT-Location is dedicated for constant monitoring of workers located underground in different parts of the mine plant. System functionalities are mostly dedicated for:

- mine dispatchers who are about to monitor the mine plant situation prevailing in the corridors of the plant,
- safety related mine departments supervising the safety of the work / service
- ventilation department providing information on the number of employees residing in each of the mine parts, critical from the point of view of the air circulation in monitored zones and mining excavations works.

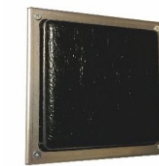
In addition, system can be used as a source of information on the currently allocated human resources, the technological work carried out by providing location data along with the identification of the employee who is looked for, in terms of qualifications and / or group / division to which they belong.

The main features of the system includes:

- modular design,
- **high precision of location**, up to 1.5 m. in underground excavations,
- determination of the position of localized man (object) in several dimensions (0D, 1D or 2D),



AT-LBS-1
ATUT - Location system base station
System access and base station which allows to determine the AT-LTAG-1 location



ANTI-2G4
Intrinsically safe 2,4GHz antenna
Antenna for 2,4GHz band designed to work with AT-LBS-1 human monitoring system base station



PZW-1 / ATVisio-2
Surface visualization unit with ATVisio2 software platform
Manufacturing Execution System developed to support dispatcher operations providing control and safety monitoring, visualization, database (SCADA), voice communication, data network diagnosis



1,5 m. location accuracy



Accelerometer sensor - movement detection



Wireless system devices configuration



AT-TEL
Intrinsically safe VoIP telephone
Intrinsically safe VoIP telephone made to work with ATUT-MFE network infrastructure



AT-LTAG-1
Active localization tag with LCD display
Active identification tag with LCD display (text messaging), wireless battery charging and built-in accelerometer sensor